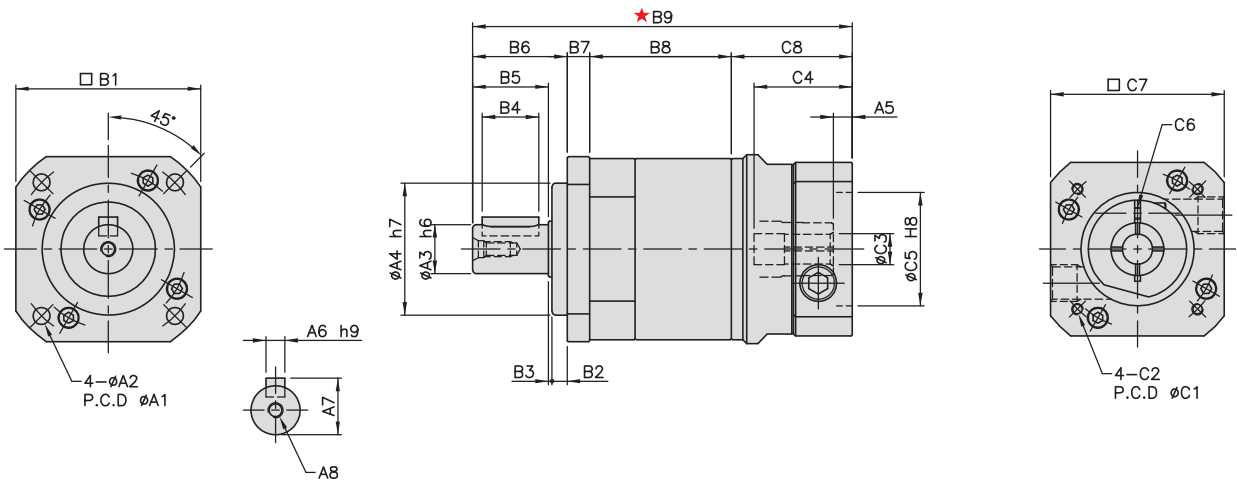




MODEL : KFB

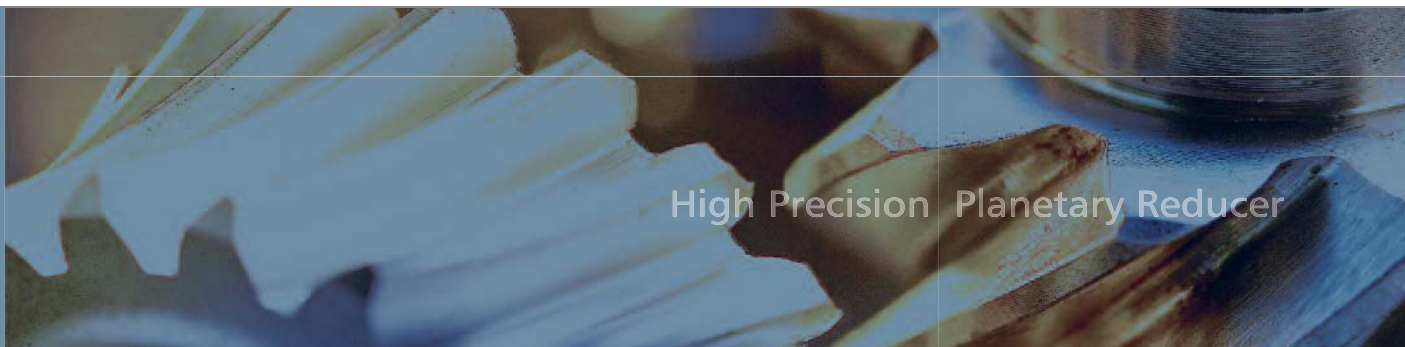
Single Reduction

RATIO : 3.4.5.7.10



unit:mm

Model code	50	70	90	120	145	180
A						
A1	50	70	100	130	165	215
A2	4.5	6	6.8	9	11	13
A3	13	16	22	32	40	55
A4	35	50	80	110	130	160
A5	5	6	9	10	10	13
A6	5	5	6	10	12	16
A7	15	18	24.5	35	43	59
A8	M4×P0.7	M5×P0.8	M8×P1.25	M10×P1.5	M12×P1.75	M14×P2.0
B						
B1	50	70	90	120	145	180
B2	4	5	6	8	10	20
B3	1	1	2	2	3	4
B4	15	20	30	40	65	70
B5	20	28	36	50	74	82
B6	25	34	44	60	87	106
B7	6	8	9	12	15	16
B8	37.5	49.5	59	86	95	69.5
B9	100.5	132.5	170.5, 185	227.5, 237.5	291	325
C						
C1	46, 60, 63, 70	46, 70, 75, 90	70, 90, 100 115, 145, 165	90, 100 115, 145, 165	145, 165 200, 215	200, 215 235, 265
C2	M4, M5	M4, M5, M6	M6, M8, M10	M6, M8, M10	M8, M10, M12	M12
C3	5, 6.35, 8	6.35, 8 11, 12, 14	14, 16 19,(22, 24)	19,22 24, 28,(32)	22, 24 28, 32, 35	38, 42, 48
C4	26	33.5	51, 65.5	63, 73	81.5	115
C5	30, 40, 50	50, 60, 70	50, 70, 80 95, 110, 130	70, 80 95, 110, 130	110, 114.3 130, 180	114.3, 180 200, 230
C6	M3	M4, M5	M6	M8	M10	M10
C7	46, 55, 60	64, 70, 80	92, 110 130, 142	130, 150	146, 150 180, 190	180, 200 220, 250
C8	32	41	58.5, 73	69.5, 79.5	94	133.5

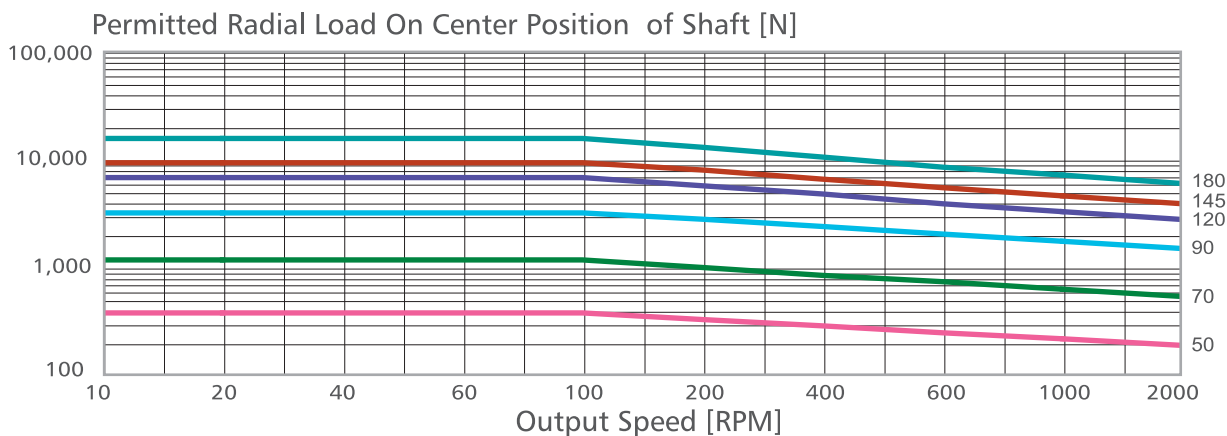


Model No.	Unit	Ratio	50	70	90	120	145	180
Rated Output Torque	Nm	3	17	50	125	268	482	940
		4	15	45	111	238	426	860
		5	14	42	104	223	401	835
		7	13	39	98	208	373	790
		10	12	37	92	198	356	760
Max. Output Torque	Nm	3~10	3 Times of Rated Output Torque					
Rated Input Speed	rpm	3~10	5,000	4,800	4,000	3,600	3,000	3,000
Max. Input Speed	Nm	3~10	8,000	6,000	6,000	4,800	3,600	3,600
Backlash	arc min	3~10	≤ 8	≤ 8	≤ 8	≤ 8	≤ 8	≤ 8
Torsional Rigidity	Nm/arc min	3~10	2.3	5	15	45	69	140
Max. Radial Force	N	3~10	750	1,180	3,000	6,500	9,100	11,150
Max. Axial Force	N	3~10	325	590	1,500	3,250	4,550	5,575
Service Life	hr	3~10	10,000 (Continuous Operation 4,000 hrs)					
Efficiency	%	3~10	≥ 97%					
Operating Temperature	°C	3~10	-25°C ~ +90°C					
Lubrication		3~10	VIGO GREASE RE#0					
Degree of Gearbox Protection		3~10	IP65					
Mounting Position		3~10	Any					
Noise Level	dB	3~10	≤ 62	≤ 62	≤ 65	≤ 68	≤ 70	≤ 70
Weight ±3%	Kg	3~10	0.63	1.57	3.22	8	16	33

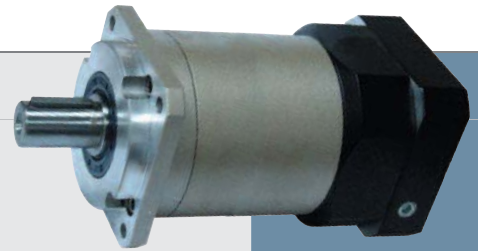
KFB

■ Mass Moments of Inertia (kg · cm²)

Ratio	50	70	90	120	145	180
3	0.03	0.15	0.57	2.99	8.84	28.50
4	0.03	0.13	0.45	2.52	7.23	23.19
5	0.03	0.12	0.44	2.49	7.12	22.81
7	0.03	0.12	0.42	2.41	6.85	22.01
10	0.03	0.12	0.41	2.36	6.74	22.03



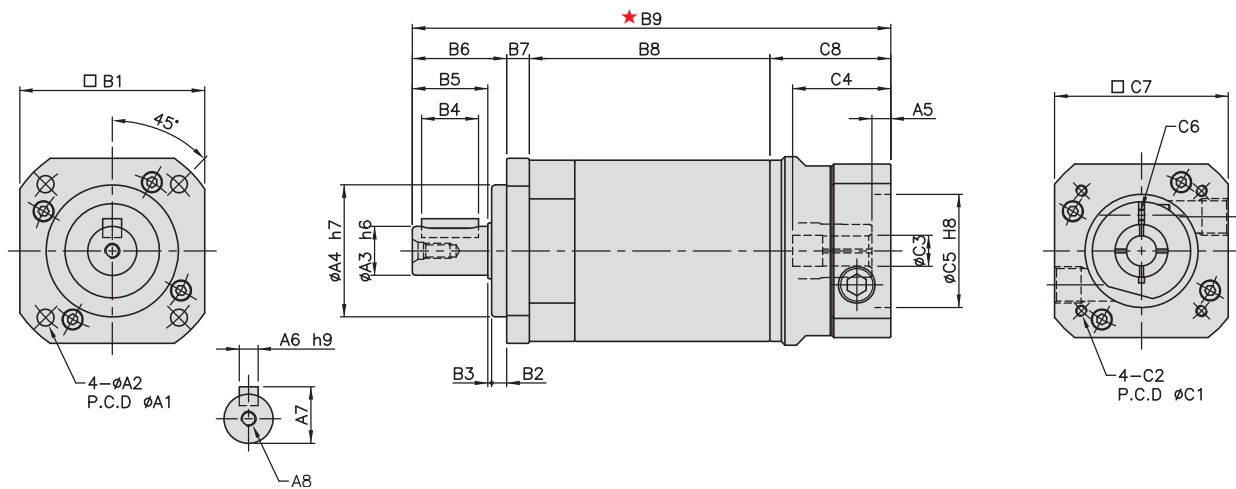
* 연속운전 사용시 본사와 상담후 선정바랍니다.



MODEL : KFB

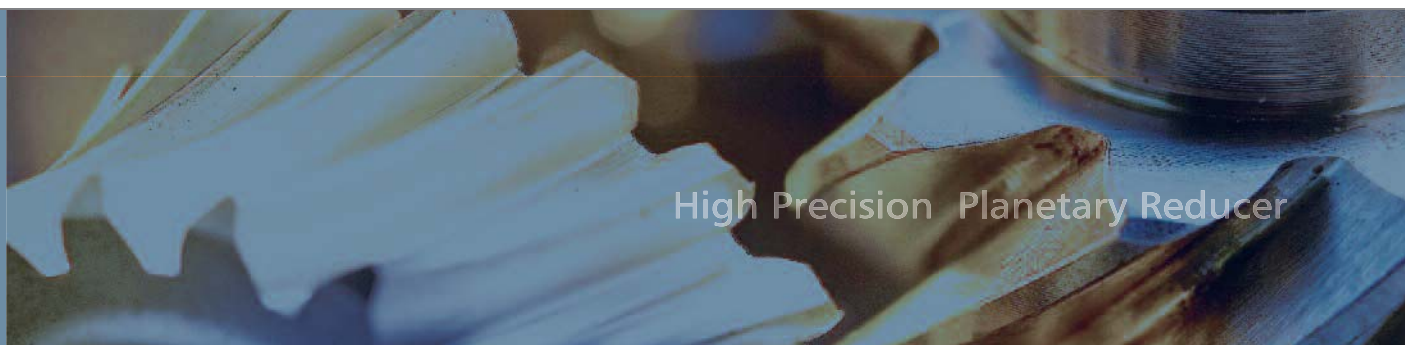
Double Reduction

RATIO : 15.20.25.30.35.40.50.70.100



unit:mm

Model code	50	70	90	120	145	180	
A	A1	50	70	100	130	215	
	A2	4.5	6	6.8	9	11	13
	A3	13	16	22	32	40	55
	A4	35	50	80	110	130	160
	A5	5	6	9	10	10	13
	A6	5	5	6	10	12	16
	A7	15	18	24.5	35	43	59
	A8	M4×P0.7	M5×P0.8	M8×P1.25	M10×P1.5	M12×P1.75	M14×P2.0
B	B1	50	70	90	120	145	180
	B2	4	5	6	8	10	20
	B3	1	1	2	2	3	4
	B4	15	20	30	40	65	70
	B5	20	28	36	50	74	82
	B6	25	34	44	60	87	106
	B7	6	8	9	12	15	16
	B8	63.7	83.5	98.7	140	158.7	139
	B9	126.7	166.5	210.2, 224.7	281.5, 291.5	354.7	394.5
C	C1	46, 60, 63, 70	46, 70, 75, 90	70, 90, 100 115, 145, 165	90, 100 115, 145, 165	145, 165 200, 215	200, 215 235, 265
	C2	M4, M5	M4, M5, M6	M6, M8, M10	M6, M8, M10	M8, M10, M12	M12
	C3	5, 6.35, 8	6.35, 8 11, 12, 14	14, 16 19,(22, 24)	19, 22 24, 28,(32)	22, 24 28, 32, 35	38, 42, 48
	C4	26	33.5	51, 65.5	63, 73	81.5	115
	C5	30, 40, 50	50, 60, 70	50, 70, 80 95, 110, 130	70, 80 95, 110, 130	110, 114.3 130, 180	114.3, 180 200, 230
	C6	M3	M4, M5	M6	M8	M10	M10
	C7	46, 55, 60	64, 70, 80	92, 110 130, 142	130, 150	146, 150 180, 190	180, 200 220, 250
	C8	32	41	58.5, 73	69.5, 79.5	94	133.5



Model No.	Unit	Ratio	50	70	90	120	145	180
Rated Output Torque	Nm	15	17	50	125	268	482	940
		20	15	45	111	238	426	860
		25	14	42	104	223	401	835
		30	17	50	125	268	482	940
		35	13	39	98	208	373	790
		40	15	45	111	238	427	860
		50	14	42	104	223	402	835
		70	13	40	98	208	373	790
		100	12	37	92	198	357	760
Max. Output Torque	Nm	15~100	3 Times of Rated Output Torque					
Rated Input Speed	rpm	15~100	5,000	4,800	4,000	3,600	3,000	3,000
Max. Input Speed	Nm	15~100	8,000	6,000	6,000	4,800	3,600	3,600
Backlash	arc min	15~100	≤ 12	≤ 12	≤ 12	≤ 12	≤ 12	≤ 12
Torsional Rigidity	Nm/arc min	15~100	2.3	5	15	45	69	140
Max. Radial Force	N	15~100	750	1,180	3,000	6,500	9,100	11,150
Max. Axial Force	N	15~100	325	590	1,500	3,250	4,550	5,575
Service Life	hr	15~100	10,000 (Continuous Operation 4,000 hrs)					
Efficiency	%	15~100	≥ 94					
Operating Temperature	°C	15~100	-25°C ~ +90°C					
Lubrication		15~100	VIGO GREASE RE#0					
Degree of Gearbox Protection		15~100	IP65					
Mounting Position		15~100	Any					
Noise Level	dB	15~100	≤ 65	≤ 65	≤ 68	≤ 70	≤ 72	≤ 72
Weight ± 3%	Kg	15~100	0.9	2.24	4.59	11.22	22.5	37

KFB

■ Mass Moments of Inertia (kg · cm²)

Ratio	50	70	90	120	145	180
15	0.03	0.03	0.13	0.42	2.52	7.14
20	0.03	0.03	0.13	0.42	2.52	7.14
25	0.03	0.03	0.13	0.42	2.52	6.94
30	0.03	0.03	0.13	0.42	2.33	6.94
35	0.03	0.03	0.13	0.40	2.33	6.94
40	0.03	0.03	0.13	0.40	2.33	6.76
50	0.03	0.03	0.13	0.40	2.33	6.76
70	0.03	0.03	0.13	0.39	2.29	6.56
100	0.03	0.03	0.13	0.36	2.29	6.56

* 연속운전 사용시 본사와 상담후 선정바랍니다.